

Building Meaningful Relationships With Partners And Law Enforcement To Impact Underserved Populations.

Impact
Teen Drivers

Ivette Chaidez
Affected Family Member
EOC, Impact Teen Drivers





Why I Advocate: Itzayana Chaidez

Reaching Communities During A Pandemic

- ▶ Interactive Virtual Presentations (webinars):
Zoom, Microsoft Teams, Google Classrooms, etc.
- ▶ Teens
- ▶ Parents + Teens
- ▶ Interactive Education Modules:
 - ▶ What Do You Consider Lethal?
 - ▶ Are We Living in a Dream World?
 - ▶ Graduated Driver Licensing
- ▶ Available in English and Spanish

What Do You Consider LETHAL?
¿Que Consideras Letal?

OTS CALIFORNIA OFFICE OF TRAFFIC SAFETY

Impact Teen Drivers

Causas de Muertes de Adolescentes

- **Asesinato** 2,535
- **Suicidio** 2,386
- **Enfermedades** 2,269
- **Otras Lesiones** 1,335
- **Choques Automovilísticos** ~ 4,000

zoom

Who You Can Partner with:

- ▶ Local law enforcement:
 - Public Information Officers
 - School Resource Officers
 - Probation Officers
- ▶ Medical Professionals
- ▶ Injury Prevention Organizations
- ▶ School administrators
- ▶ Coaches
- ▶ Community Organizations



Underserved Communities

- ▶ TITLE I SCHOOLS
- ▶ SPANISH SPEAKING COMMUNITIES
- ▶ AT RISK YOUTH
 - Community Schools
 - Alternative Schools
 - Continuation Schools
- ▶ INCARCERATED YOUTH
- ▶ FOSTER YOUTH + PARENTS



Resources

- ▶ Let's explore some resources that you can use to reach your communities.

Parent-Teen GDL Module

Graduated Driver Licensing

Impact
---Teen Drivers---

Impact
---Teen Drivers---



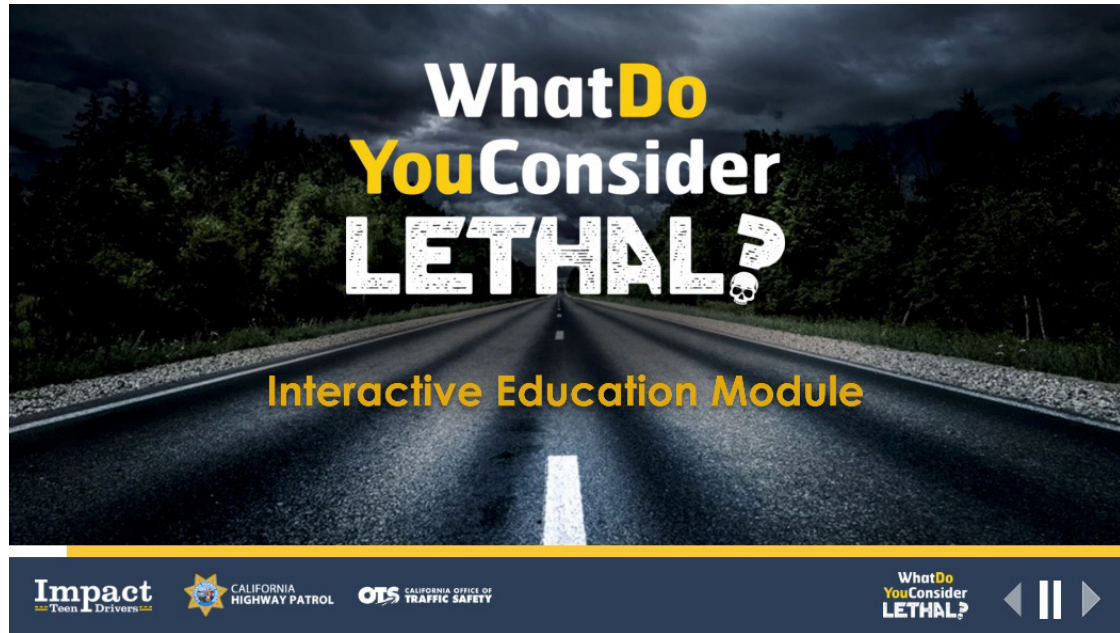
CALIFORNIA
HIGHWAY PATROL

OTS

CALIFORNIA OFFICE OF
TRAFFIC SAFETY



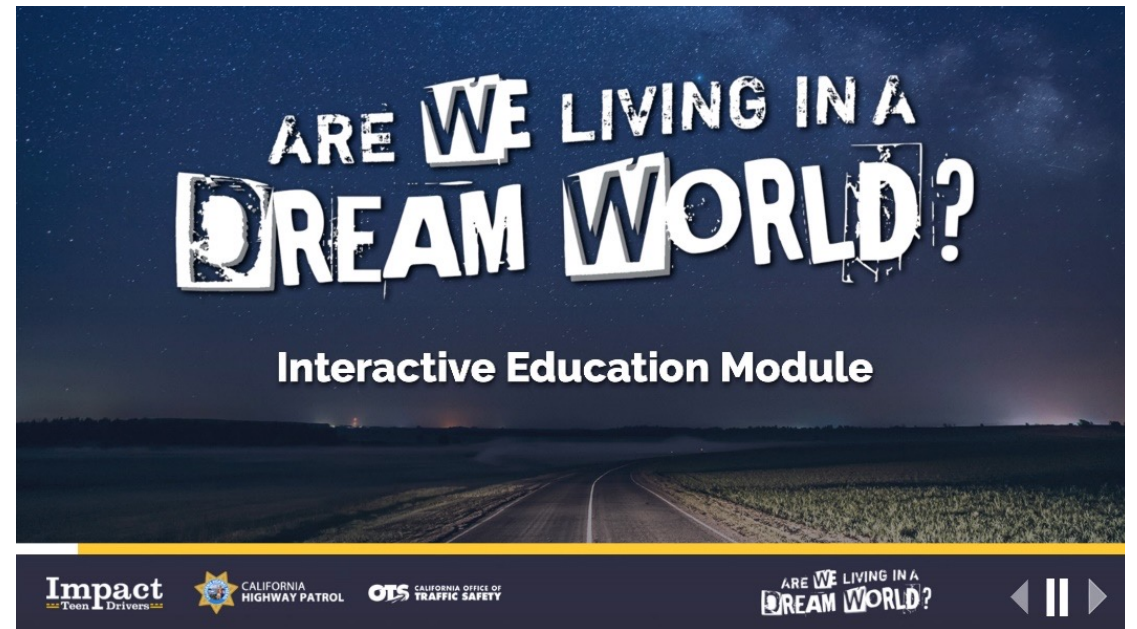
Interactive Education Modules



What Do You Consider Lethal?

Teen Module

60 minutes



Are We Living In A Dream World?

Teen Module

45 minutes

Welcome to

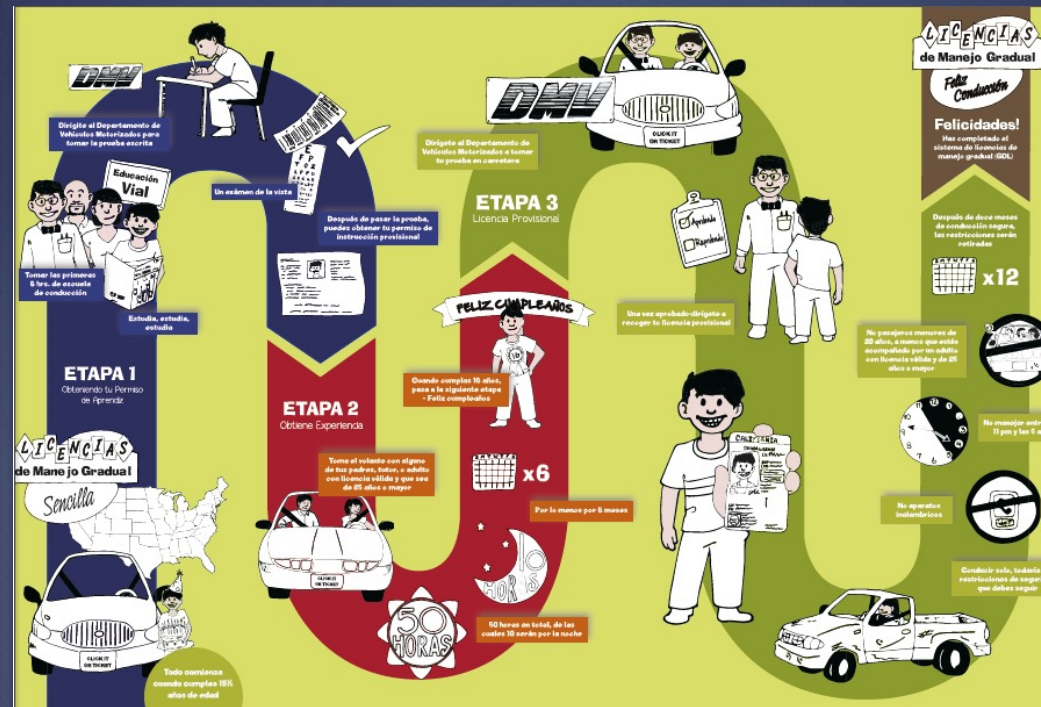
Graduated Driver Licensing

MADE SIMPLE

California

Meet Brian,
your instructor.

Impact
Teen Drivers



RECKLESS and
DISTRACTED
driving is the
#1 KILLER
of TEENAGERS in America

Pledge: what do you consider
UNETHICAL?

For my future—for life's big dreams and little comforts,
I hereby make a conscious commitment to safe driving.

For my friends, my family, and anyone else who may have fond feelings toward me,
I pledge not to drive distracted or recklessly.

For every person I may never meet, but share the road with,
I pledge to give driving the 100% attention it deserves.

I VOW not to text, eat, or do anything that causes me to take my hands off the wheel or my eyes off the road.

I COMMIT to speaking up to a driver who is driving unsafely.

I COMMIT to wearing a seatbelt and making sure everyone in the car does the same.

I COMMIT to SAFE DRIVING, to THE LAW, and to MY LIFE.

impactteendrivers.org

Signed: _____

Educational Resource Library

Online Training

Evidence-Based Curricula

Student/Teacher Resources

Presentations

GDL Education Materials

Order Printed Materials



Order posters, risk wheels, shirts, brochures, and more.

Train the Trainers

Our Train the Trainers (TTT) is an intensive workshop designed to help first responders, nurses and other health professionals, and educators address the number one killer of teens in America—reckless and distracted driving.

In addition to covering current research trends, evidence-based strategies such as Graduated Driver Licensing laws, distracted driving, seat belts, and other best practices for affecting teen driving attitudes and behaviors, Train the Trainers provides participants with the necessary knowledge and evidence-based educational resources to successfully deliver core Impact Teen Drivers programs in their local communities.

Just as all our programs are designed to engage, educate, and empower, Train the Trainers ensures participants not only learn the material in a compelling way, but also motivates them to effectively share it. It is through this essential training that we have cultivated a nationwide network of Impact Teen Drivers ambassadors with whom we are so incredibly proud to partner.

We extend a special thank you to all those that have chosen a life of service.

If Interested in bringing any of our evidence-based programs to your school or community, please [email us](#) or call (916) 733-7432.

To access our educational resource library and download videos, please login or create an account below.

Log in >

If you don't have an ITD Account, please [click here](#) to set up a new account.



Law Enforcement WDYCL Tutorial



Health Educator WDYCL Tutorial

WWW.IMPACTTEENDRIVERS.ORG

Login | Register

Impact
Teen Drivers

HOME ABOUT US OUR PROGRAMS TRAINING & RESOURCES GET INVOLVED WHO WE WORK WITH CONTACT

Reckless & Distracted Driving is the #1
Killer of Teens in America

Get Involved

Bring Impact Teen Drivers to Your Community [Learn More](#)

Register for an ITD Account

Rachel Aguilar

.....

Password strength: Strong

Confirm password *

First Name *

Last Name *

School or Organization *

City * State * Zip code *

☐ I'm not a robot

reCAPTCHA
Privacy - Terms

Have an account? [Click here](#)

Create new account >

Thank You For Joining Us!

Ivette Chaidez

EOC, Impact Teen Drivers

Ivette@ImpactTeenDrivers.org

www.ImpactTeenDrivers.org

www.CreateRealImpact.com

The logo for Impact Teen Drivers features the word "Impact" in a large, bold, white serif font. Below it, the words "Teen Drivers" are written in a smaller, white sans-serif font, flanked by two horizontal yellow dashed lines.

Impact
Teen Drivers