



Health Care and Service Provider Needs Assessment to Help Identify Aging At-Risk Drivers in Florida

Lifesavers 2016 – Long Beach, CA
Gail M. Holley, Florida Dept. of Transportation
April 3, 2016



Today We Will Talk About



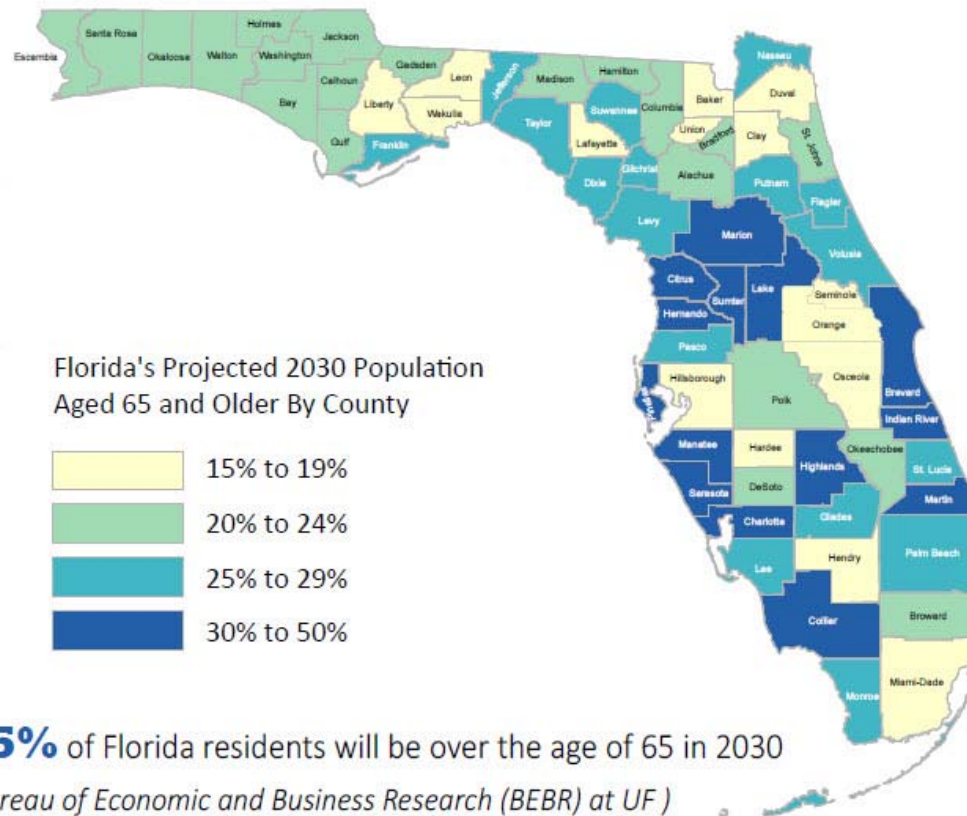
- ☀ Florida Department of Transportation's Aging Road User Program
- ☀ Florida's Safe Mobility for Life Coalition
 - ☀ Aging Road User Strategic Safety Plan
 - ☀ Prevention and Early Recognition Emphasis Area
- ☀ Florida's Needs Assessment to Assist in the Prevention and Early Recognition of Florida's At-Risk Drivers
 - ☀ What we did
 - ☀ What we learned
 - ☀ What is next

A Little History



- ☀️ 1990: FDOT's Elder Road User Program.
 - State Traffic Engineering and Operations Office.
 - Implemented Roadway improvements to help compensate for age-related changes.
- ☀️ 2004: FDOT's Safe Mobility for Life Program.
 - Needed to expand focus to make a difference and reduce crashes.

FDOT's Catalyst for Change: Florida's 65+ Population Projections



www.FLsams.org



Safety is Golden



Safe Mobility for Life Coalition



Our Approach



- ☀ Balance safety and mobility needs our growing aging population.
- ☀ Promoting a positive and empowering approach to aging road user safety.
- ☀ Working together to improve safety, access, and mobility by implementing a comprehensive Aging Road User Strategic Safety Plan.



An Aging Road User



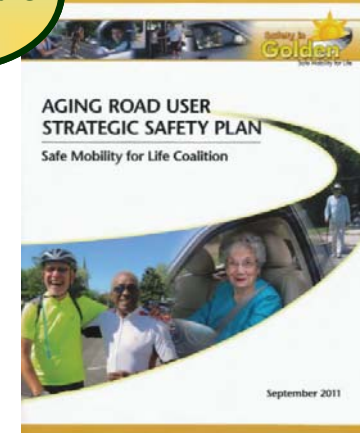
☀️ *Someone who is a driver, passenger, pedestrian, bicyclist, transit-rider, motorcyclist, or operator of a non-motorized vehicle who is 50 years of age or older, with a special focus on the 65 year and older age group.*



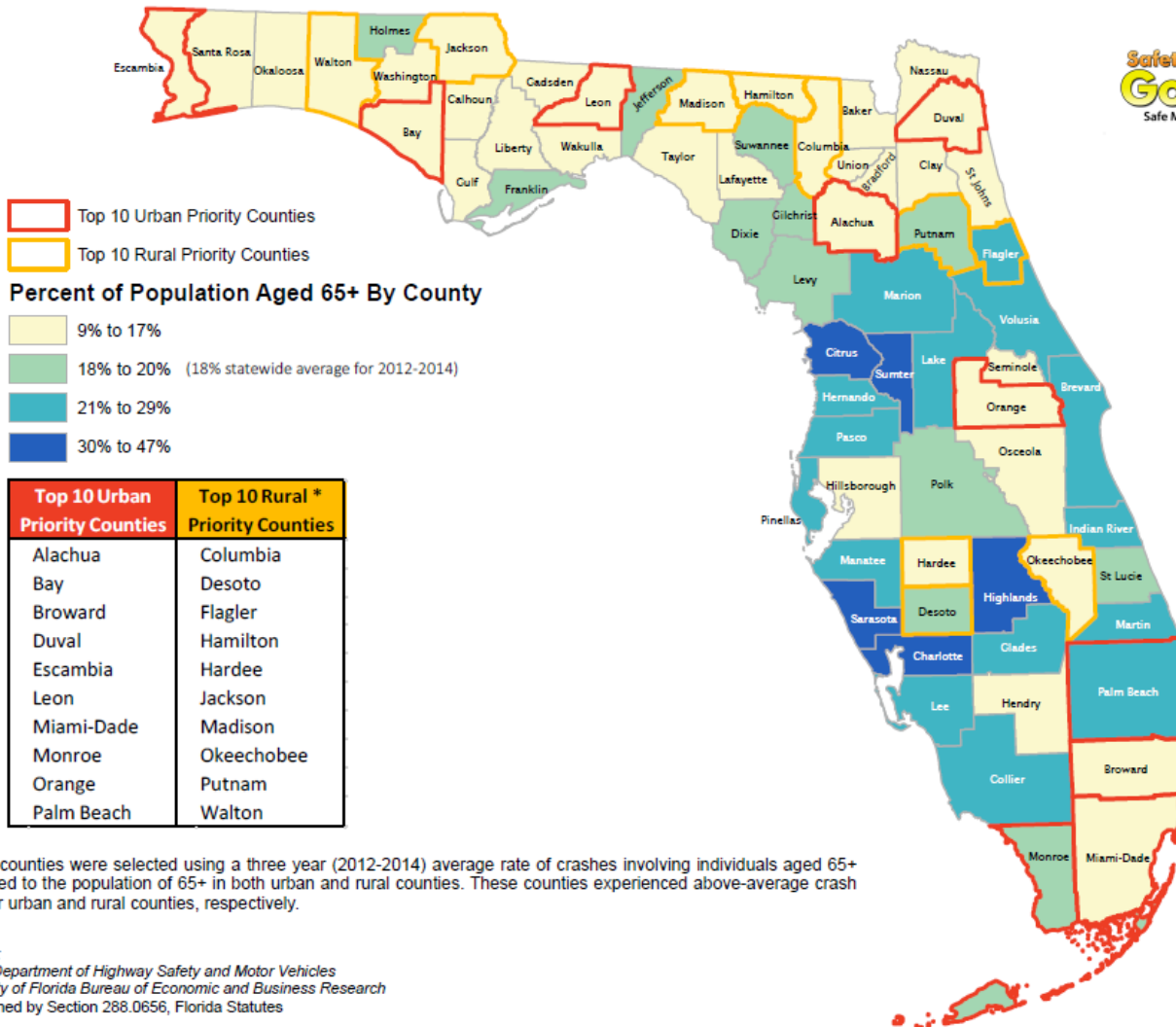
Florida's Aging Road User Strategic Safety Plan



- ☀ Comprehensive plan with ten emphasis areas to help all stakeholders.
- ☀ Tied to Florida's Strategic Highway Safety Plan.
 - At-Risk Drivers Emphasis Area.
- ☀ Aligns with the Florida Transportation Plan.
- ☀ Data-driven and evaluation based plan.



2016 Florida's Aging Road User (65+) Priority Counties



Priority counties were selected using a three year (2012-2014) average rate of crashes involving individuals aged 65+ compared to the population of 65+ in both urban and rural counties. These counties experienced above-average crash rates for urban and rural counties, respectively.

Sources:
 Florida Department of Highway Safety and Motor Vehicles
 University of Florida Bureau of Economic and Business Research
 * As defined by Section 288.0656, Florida Statutes

Prevention & Early Recognition Emphasis Area



- ☀ **Goal:** Promote the value of prevention strategies and early recognition of at-risk drivers to aging road users and stakeholders.
- ☀ **Objective:** Increase early detection of aging at-risk drivers through improved strategies for identification.
- ☀ **Objective:** Increase the resources, tools, and information available to aging road users with visual, cognitive, and physical impairments.
- ☀ **Objective:** Increase the ability of physicians and the medical community to recognize and report aging at risk drivers.
- ☀ **Objective:** Increase the number of drivers who are proactive about staying safe on the road.

Prevention & Early Recognition Emphasis Area



- ☀ **Goal:** Promote the value of prevention strategies and early recognition of at-risk drivers to aging road users and stakeholders.
- ☀ **Objective:** Increase early detection of aging at-risk drivers through improved strategies for identification.
- ☀ **Objective:** Increase the resources, tools, and information available to aging road users with visual, cognitive, and physical impairments.
- ☀ **Objective:** Increase the ability of physicians and the medical community to recognize and report aging at risk drivers.
- ☀ **Objective:** Increase the number of drivers who are proactive about staying safe on the road.

**FDOT's Research Project: Health Care
Providers and Older Adult Service
Organizations to Assist in the Prevention
and Early Recognition of Florida's At-Risk
Drivers**

What We Wanted to Learn



- ☀️ What do they know now about driving and older adults?
- ☀️ What is their usual practice regarding older adults and driving?
- ☀️ Are they interested in learning more about older adults and driving? Why or why not?
- ☀️ What information/resources about driving and older adults would be most helpful?
- ☀️ What would be the most effective way for them to receive information/resources?

Needs Assessment Methods



- ☀ Contract from FDOT Research Center to Vendor (SRA Research Group)
 - ☀ 12 months
 - ☀ \$95,328.00
- ☀ SRA reviewed existing published information and created a Technical Resource Group to improve the survey instrument design
- ☀ Health care professionals included physicians, nurses, nurse practitioners, physician's assistants, occupational and physical therapists, pharmacists, optometrists, EMTs, medical assistants, and others
- ☀ Social service providers included social workers, service professionals, government staff, law enforcement, driving instructors, and others

Needs Assessment



- ☀ Survey tool disseminated to **2 groups** – health care professionals and social service providers.
- ☀ Distributed statewide via web, phone, and fax from Oct. 13 – Nov. 24, 2014.
- ☀ Responses received from all **67** counties.
- ☀ **1,154** survey responses received.
 - **608** health care professionals
 - **546** social service providers

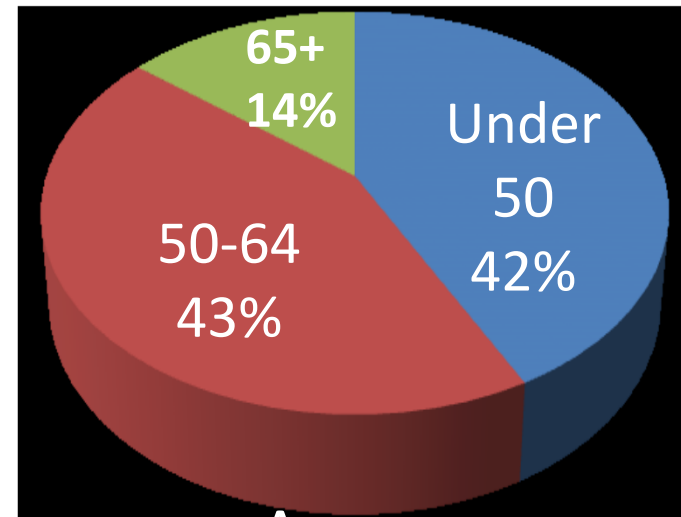
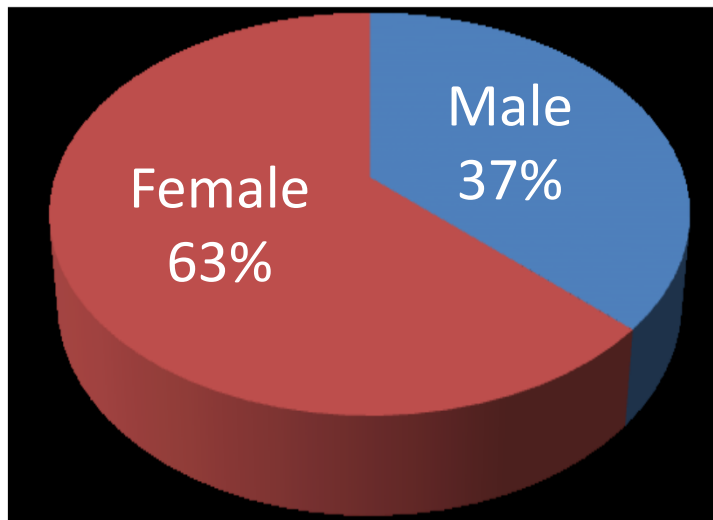


Response Rate by FDOT District

- Southwest Florida (D1): 19 percent
- Northeast Florida (D2): 16 percent
- Northwest Florida (D3): 12 percent
- Southwest Florida (D4): 16 percent
- Central Florida (D5): 18 percent
- South Florida (D6): 6 percent
- West Central Florida (D7): 13 percent



Gender and Age



Urban vs. Rural



Location	Counties	Number of responses
Urban	All	1032
Rural	All	122
Urban	Priority	442
Rural	Priority	43

**Medical professionals = 608 of 1154
= 53% of respondents**



	Percent	Number of Surveys Completed
General practitioner	1%	16
Family practice	5%	56
Internal medicine	4%	48
Emergency department physician	3%	32
Ophthalmologist	2%	23
Geriatrician	1%	6
Neurologist	1%	13
Physician's assistant	3%	39
Nurse	7%	86
Nurse practitioner	6%	65
Occupational/physical therapist	7%	78
Optometrist	5%	53
Pharmacist	6%	68

Social Service Professionals = 546 of 1154 = 47% of respondents



Social worker	16%	188
Educator	5%	60
State government staff	3%	38
Local government staff	10%	116
Elected official	1%	14
Social services professional/service provider to older adults	11%	125
Health department staff	2%	21
Law enforcement member	6%	73
EMT	2%	23
Driving instructor	1%	10
Geriatric care	1%	11
Medical assistant	2%	20
Urgent care	0%	4
Mental health/therapy	2%	19
Physician	0%	4
Transportation	1%	14

Key Findings



- ☀ Majority of medical professionals (85%) and social service providers (87%) have conversations with older adults about driving.
 - Q: Do you “EVER” have conversations...
- ☀ Barriers to discussing driving are the same for both groups.
 - Lack of resources to assess (55%)
 - No transportation options to offer (50%)
 - Not driving may negatively impact quality of life (49%)
 - Lack of resources to educate (41%)
 - No time to assess (40%)

Means of transportation older adults use to get to your organization/facility



Question asked of Social Service Providers
ONLY

	Social Service Providers
Drive personal vehicle	69%
Ride from friend/family	62%
Public transit fixed route service	28%
All of these	23%
Taxi/car service	23%
Paratransit service	22%
Volunteer driver programs	12%
Don't know	7%

Types of Tests Used to Assess Driving Ability of Older Adults



Question asked of Medical Service Professionals ONLY

	Medical Professionals
Vision testing	59%
Cognitive testing	56%
Gait and balance checks	51%
Clock tests	24%
None of these	17%
Trail making tests	7%
On-the-road testing	4%
Don't know	4%
Computer driving assessment testing	3%

Key Findings



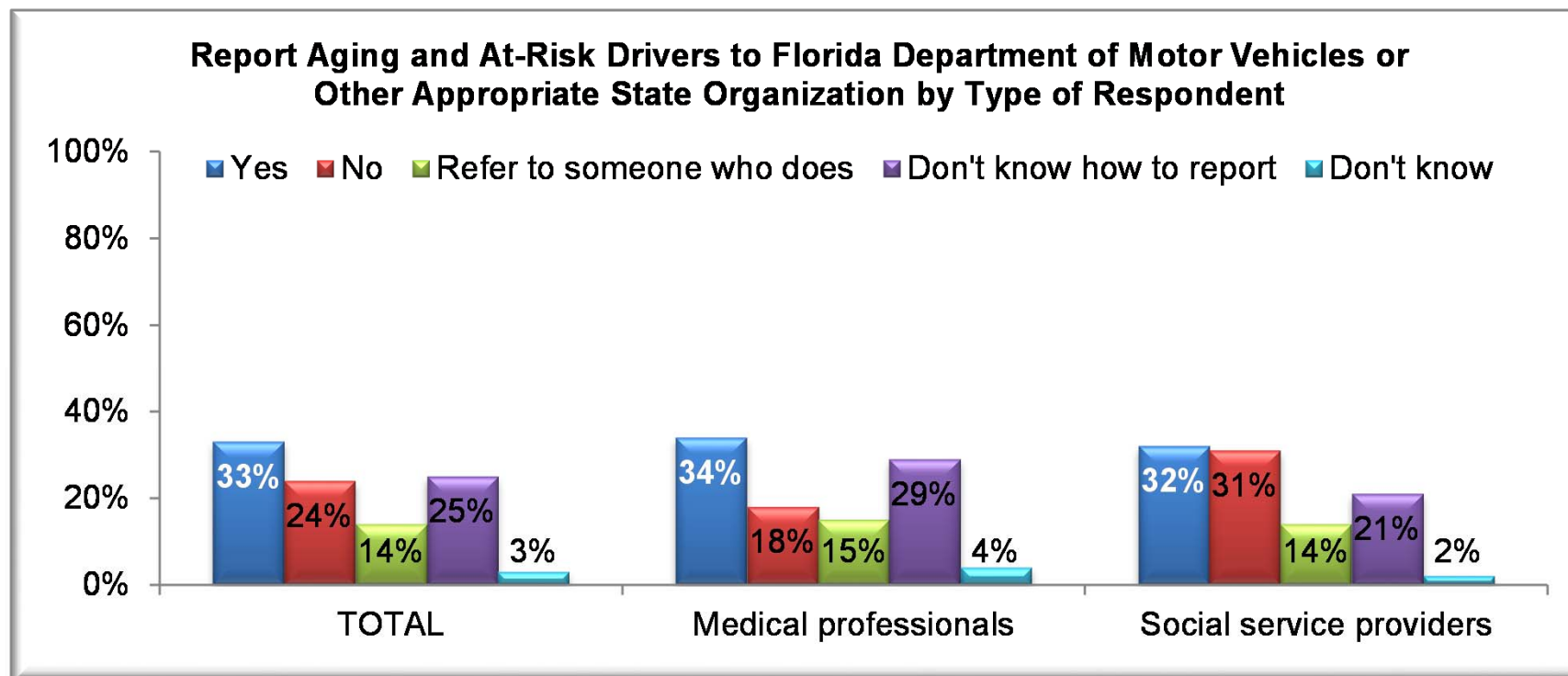
- ☀ Main topics discussed with older adults:
 - Planning for the future (56%)
 - Talking about way to drive safely (52%)
- ☀ Majority (88%) feel a simple screening tool to help identify and better predict at-risk drivers would be helpful.
 - 88% agree identifying at-risk drivers is everyone's responsibility
- ☀ Top resources they want to receive:
 - ☀ Florida's Guide for Aging Drivers
 - ☀ Local Transportation Options
 - ☀ FDOT Safe and Mobile Seniors website (www.FLsams.org)

Information Needed



	TOTAL	Medical Professionals	Social Service Providers
A simple screening instrument to help identify and better predict at-risk drivers would be helpful	88%	88%	87%
Identifying at-risk drivers and road users is everyone's responsibility	88%	89%	87%
I have the information and tools I need to educate on driver safety and mobility	34%	34%	34%
I have the right tools to assess driver fitness	28%	34%	21%

Reporting Aging and At-Risk Drivers



Question 6: Do you report at-risk older adult drivers to the Florida Department of Motor Vehicles or other appropriate state organization?

Additional Findings



- ☀️ Less than **1/3** of respondents knew about any of 8 existing resources listed, although over half wanted to have them be available
- ☀️ Exception was that **50%** of social service providers knew about local transportation options
- ☀️ **69%** of responders wanted print materials for their offices
- ☀️ **59%** wanted to receive information electronically

Comments Received

- ☀️ *“I think this is an area that is seriously lacking for those of us who are in health care. I do not feel we get enough education to be prepared to help families navigate this difficult issue.”*
- ☀️ *“Families need assistance with bringing up the subject. This causes lots of tension between family members and most are afraid to report issues or do not know strategies to keep their family member safe.”*



What's Next?



- ☀️ Design new educational materials based on results—*Families and Caregivers* brochure. *(Complete!)*
- ☀️ Create an implementation plan to distribute materials to health care professionals and social service providers.
 - Florida's Guide for Aging Drivers
 - www.FLsams.org and Find a Ride Page
 - Reporting information for DHSMV
- ☀️ Select appropriate screening tools for different settings and disseminate.

And then....



- ☀ Increase awareness of, referral to and number of drivers rehabilitation specialists—only 16% of medical professionals, 8% of social service professionals aware of DRS's
- ☀ Analyze study data to find more useful patterns through collaboration w/FSU, UF, Nova coalition members—e.g. rural/urban differences, etc.
- ☀ Support Alzheimer's Disease Initiative by creating requested "Dementia and Driving" materials

More Information on the Resources

Tips for Talking About Safe Driving Concerns



- ☀️ Coalition's Families and Caregivers Brochure
- ☀️ Tips on how to start the conversation
 - ☀️ What to say
 - ☀️ What NOT to say
 - ☀️ How to say it
- ☀️ Information on Florida's Medical Review Process and how to confidentially report at-risk drivers of any age



Florida's Guide for Aging Drivers



- ☀ Targeted for drivers (50+) to help them stay proactive about their driving
- ☀ Written in consumer-friendly language
- ☀ Help educate on:
 - ☀ The impact of aging on skills needed for safe driving
 - ☀ Importance of planning for retirement from driving
 - ☀ Access to local resources
- ☀ Available in English and Spanish



Also
available
in Español

www.FLsams.org



[Home -](#) [Aging Road User -](#) [Aging In Place -](#) [Vehicle -](#) [Resources -](#) [Laws -](#) [Find a Ride -](#)



Safe Mobility for Life Coalition



You hold the keys to your transportation future!

*By visiting our website you have made the first step
to learn more about staying safe and mobile in Florida*

Understand the Impact



Learn How to Stay Proactive

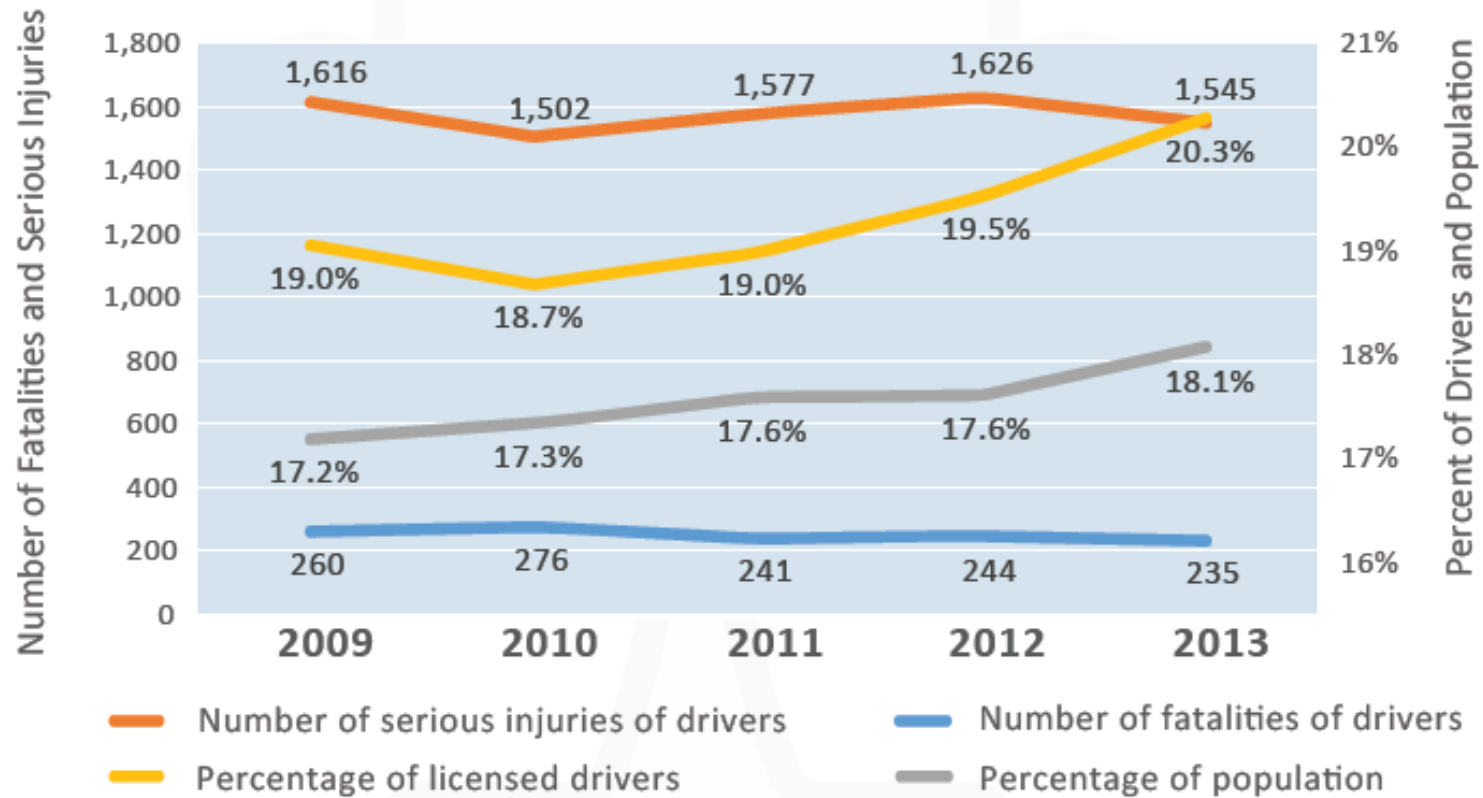


Plan for a Safe Transition



www.FLsams.org

Florida's Aging Road User Five Year Trends





Thank You!



Gail M. Holley

Safe Mobility for Life Program & Research Manager
Florida Dept. of Transportation
State Traffic Engineering & Operations Office
Email: gail.holley@dot.state.fl.us
Phone: 850-410-5414

