



**GLENDALE'S PARTICIPATION IN
MAYOR'S CHALLENGE FOR SAFER
PEOPLE, SAFER STREETS** 

Background

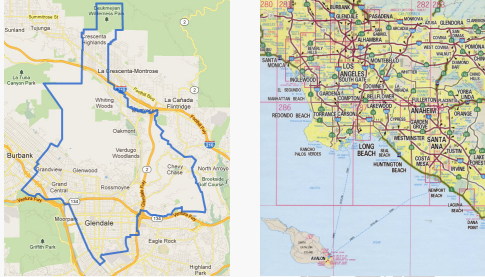
- Accidents involving pedestrians and/or bicyclists is a serious nationwide problem
- Program unveiled by U.S. Transportation Secretary Anthony Foxx in January 2015
- Washington D.C. kickoff event in March 2015
- Over 200 agencies have joined including Santa Monica, Culver City and Los Angeles
- Program provides webinars and other forums for professionals to discuss various strategies

Background

City of Glendale, CA

- Population 191,719 (per 2010 Census)
- Foreign-born residents form majority
- 2013 OTS ranking for pedestrian collisions (pop. 100,001 – 250,000): 6/56
- 2013 OTS ranking for elderly pedestrian collisions(pop. 100,001-250,000): 1/56
- Collision frequency of Allstate-insured drivers in largest U.S. cities by population 5/200
- Several high-profile accidents involving pedestrian fatalities

Background



The Challenge



- Mayor issues a public statement about the importance of bicycle and pedestrian safety
- Form a local action team to advance safety and accessibility goals
 - ✓ Pedestrian Safety Task Force
 - ✓ Bicycle Advisory Committee for Bicycle Master Plan
- Take local action on seven Challenge activities
 - Focus only on challenges that need the most attention

Challenge Activity 1 – Complete Streets

- ❖ Consider walking and bicycling equally with other forms of transportation when planning and designing transportation projects
- ✓ Public Works CIP design now follow Complete Streets approach
 - ✓ Curb extensions, bicycle lanes, sharrows, bicycle detectors, pedestrian warning lights, safety warnings on the road & high visibility crosswalks

Challenge Activity 2 – Fix Barriers

❖ Ensure that transportation facilities are accessible to all persons



- ✓ ADA Curb ramp and sidewalk repair
- ✓ Audible notifications for pedestrian push buttons
- ✓ Safe Routes to School
- ✓ Maintenance of sidewalk, bike lanes and other non-motorized transportation networks

Challenge Activity 3 – Gather Data

❖ Gather safety data including the number of bicyclists and pedestrians, crashes, fatalities and injuries, and an inventory of transportation facilities

- ✓ Pedestrian counts
- ✓ Bicyclist counts
- ✓ Volume and speed counts
- ✓ Traffic accident data

Challenge Activity 4 – Design Right

❖ Design pedestrian and bicyclist safety improvements beyond the current minimum requirements and with consideration of future pedestrian and bicyclist projections

❖ When projects are designed, safety improvements such as improved lighting, center islands, accessible curb ramps, accessible traffic signals and "road diets" be considered

- ✓ Safety improvements are now important components of projects
- ✓ Accessibility features incorporated in projects
- ✓ "Road Diets" have been and will be considered
- ✓ Review data from the Federal Highway Administration (FHWA) and implement new recommended measures as appropriate

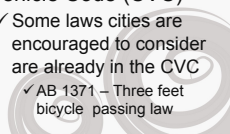
Challenge Activity 5 – Create Networks

- ❖ When performing routine maintenance projects such as pavement slurry seal and resurfacing projects, cities are encouraged to include bicyclist and pedestrian safety retrofits
- ✓ Safety upgrades with maintenance projects
 - ✓ Sidewalk repairs, bicycle lanes, sharrows, crosswalks, bump-outs
- ✓ Bicycle Master Plan
- ✓ Pedestrian Master Plan



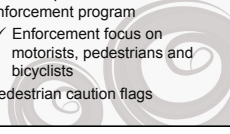
Challenge Activity 6 – Improve Laws

- ❖ Strengthen local laws, codes and ordinances to further protect non-motorized transportation users
- ❖ Consider laws related to failure to yield, safe passing, bike lighting requirements, distracted driving, and bicycle helmet use
- ✓ Discussed need for new laws with GPD
- ✓ Most enforced laws pertaining to bicyclist and pedestrian safety are set by the California Vehicle Code (CVC)
 - ✓ Some laws cities are encouraged to consider are already in the CVC
 - ✓ AB 1371 – Three feet bicycle passing law



Challenge Activity 7 - Educate and Enforce

- ❖ Perform safety outreach and education to motorists, bicyclists and pedestrians
- ❖ Police agencies should regularly and consistently enforce traffic and safety laws that pertain to bicyclists and pedestrians
- ✓ Pedestrian and bicycle safety outreach programs
 - ✓ At senior centers and schools
 - ✓ PSA's on GTV-6
 - ✓ Accident reenactments
 - ✓ Bike-to-Work Day
 - ✓ Walktober
 - ✓ Pedestrian safety education
- ✓ Police Department traffic enforcement program
 - ✓ Enforcement focus on motorists, pedestrians and bicyclists
- ✓ Pedestrian caution flags



Moving Forward

- ✓ Persistence
- ✓ Maintain community involvement
- ✓ Monitor data and implement recommendations by USDOT
- ✓ Continue to seek out new technologies grants and opportunities
- ✓ Coordinated engineering, education and enforcement



Mayor's Challenge for Safer People, Safer Streets

Shea Eccleston-Banwer
Public Works Manager
City of Glendale, CA
(818) 548-3900
SEccleston@GlendaleCA.Gov