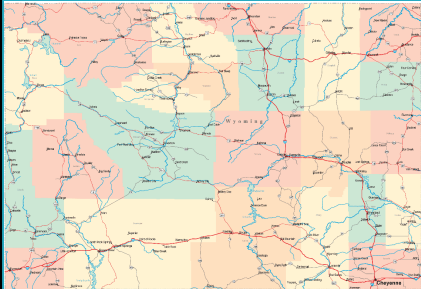


RURAL SEAT BELT ENFORCEMENT
Lifesavers Presentation 2016

Monti Allsop
LEL Wyoming Highway Safety Office
Monti.allsop@wyo.gov
307-631-3301






WYOMING SEATBELT USAGE 79%
NATIONAL SEATBELT USAGE 87%

POPULATION 584,153


28,416 OF MILES OF ROADWAYS

23 COUNTIES



CHALLENGES:

- Libertarian Philosophy is dominant in the State
- Secondary Law
- Apathetic/Complacent Agency Administrations
- Low Priority Mindset of Officers
- Manpower
- Media Coverage



PARTICIPATION
55 Law Enforcement Agencies

- 20 of 23 Counties
- 32 Municipalities
- University of Wyoming
- 2 State Agencies



RECRUITMENT
Since 2013

- 3 Counties
- 7 Cities/towns



Diamondville Wyoming

- Area: 1.3 mi²
- Population: 733 (2013)





"Our office does mostly criminal investigations"

"I can't seem to motivate my people to work traffic"



OUTREACH & PARTNERSHIPS

- The Academy Night Out
- Safe Communities
- Wyoming State Fair
- State conferences and meetings, WASCOP, GCID etc.



THE ACADEMY NIGHT OUT

- Presentations for about 100 recruits a year
- Class ranges from 25-50
- New officers
- Partnership between the WLEA and WHP



PROMOTING HIGHWAY SAFETY

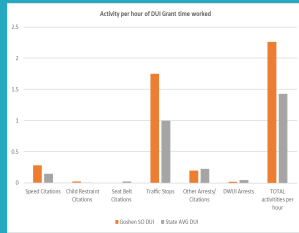
Multi Jurisdictional Traffic Enforcement Operations

- Wyoming Hwy 59
- Highway 287-Ft. Collins-Laramie
- Fremont County Pilot Project



REPORTING AND ACCOUNTABILITY

- Agency Reports
- Enhanced tracking
- Improved performance
- Increased expectations



THE MISSION

Absent agency leadership, local government and the community, who will promote occupant protection and impaired driving enforcement?

QUESTIONS AND COMMENTS

Monti Allsop
LEL Wyoming Highway
Safety Office
Monti.allsop@wyo.gov
307-631-3301