



Best Practices in Underage Drinking Prevention

March 17, 2015

Introduction

- Lieutenant Colonel James Winters, Illinois State Police
 - Operational Services Command – Division of Operations
 - Covers Intelligence, Riverboat/Gaming, Protection Services Unit, and Operational Services: Air Operations: SOCOM, Commercial Motor Vehicle, Statewide Intelligence Service, Medicaid Fraud Control Bureau, Trash Crash Reconstruction

Problem

- Each year approximately 4,600 drivers under the age of 21 are arrested for DUI and more than 2,600 underage drivers violate the zero tolerance of alcohol law. (Illinois Department of Transportation)

Critical Partnerships

- Illinois Department of Transportation
- Illinois Department of Human Services
- Lifesavers and other private safety organizations such as insurance companies
- Safety Education Officers within ISP
- Local Police Departments

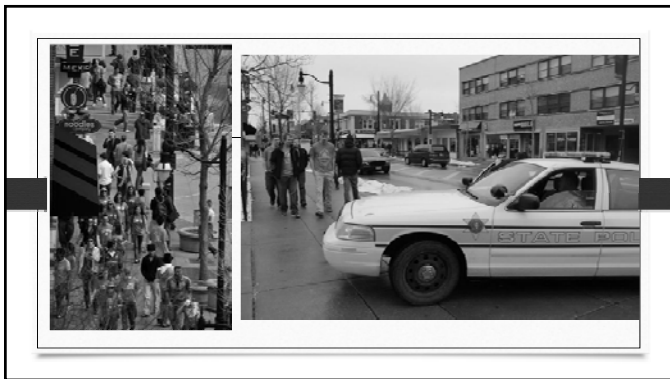
Several Ways to combat Teen Drinking and Driving:

- Campus/TAP – Teen Alcohol Patrol
- ACE Patrol – Alcohol Countermeasure Enforcement
- NITE Patrol – Nighttime Enforcement Patrol
- Drive for Tomorrow



Campus/Teen Alcohol Patrol (TAP)

- This program focuses on underage drinking in Illinois and specifically provides additional resources to the ISP to combat DUI, sale of alcohol to minors and illegal consumption/possession of alcohol by minors.
- Examples of details: covert retail compliance checks, bar identification checks, saturation patrols, covert surveillance details.
- Enforcement details are conducted during prom, graduation and other events where underage students are likely to consume alcohol.
- Campus Details – target colleges age students. TAP Details – target high school age student.
- Funded by the Illinois Department of Human Services

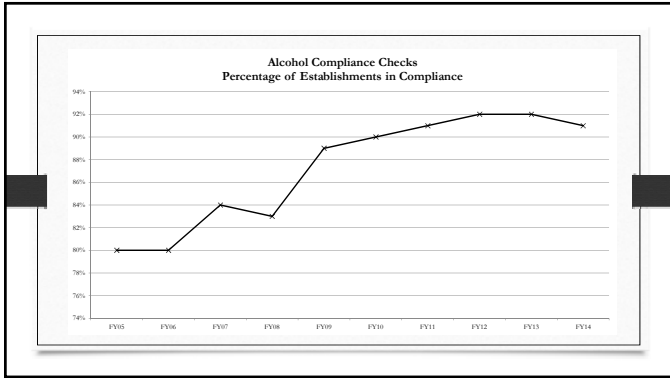


Driver's License Format Change

- Instituted in Fall of 2007; Provided a more easily identifiable way to determine Under and Over 21 Driver's License (DL)
- Under 21 DL is vertical
- Over 21 DL is horizontal

Alcohol Establishment Surveys

Fiscal Year	Enforcement Hours	Number of Establishments Surveyed	Number of Establishments Sold	Percentage of Establishments in Compliance
FY05	3,934.5	2,302	464	80%
FY06	4,531.0	2,649	523	80%
FY07	5,046.5	3,114	491	84%
FY08	4,189.0	2,347	409	83%
FY09	4,131.5	2,449	259	89%
FY10	4,153.5	2,472	240	90%
FY11	3,590.5	2,533	211	92%
FY12	2,377.5	1,788	154	91%
FY13	2,877.0	2,214	180	92%
FY14	1,134.5	983	80	92%
Total	35,965.5	22,851	3,011	87%



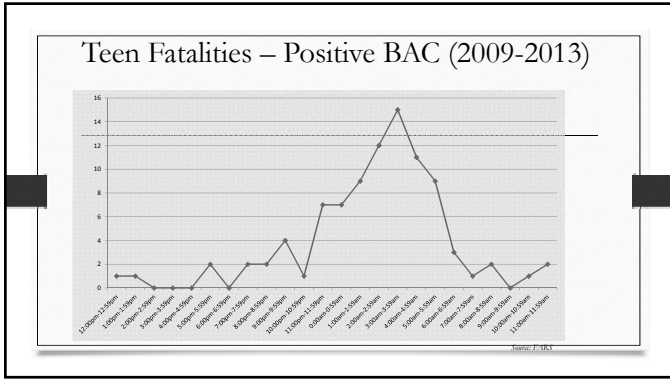
Alcohol Countermeasures Enforcement (ACE)

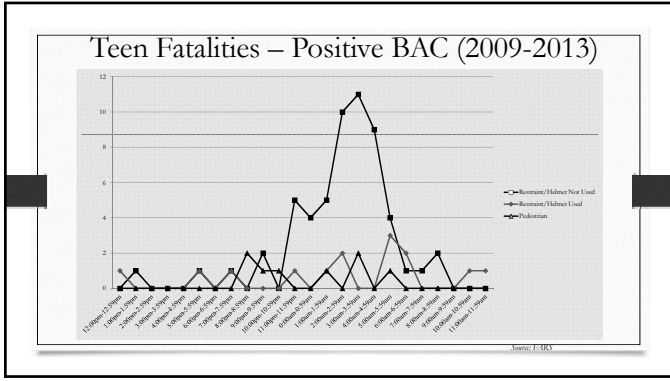
- ACE Patrol – Provides funds for the ISP to conduct additional enforcement efforts to deter adult and youth involvement in alcohol-related crashes, driving under the influence and other alcohol-related laws are enforced using both overt and covert enforcement techniques.
- In FY 2014, ISP Troopers worked 5,944.5 hire back hours on saturation patrols and 894.5 hours on covert details. There were a total of 10,593 citations and warnings issued this fiscal year. Officers made 609 arrests for DUI, drug/alcohol-related or zero tolerance offenses during saturation patrols.
- Funded in 2014 by the Illinois Department of Transportation

Nighttime Enforcement Patrol (NITE) Patrol

- NITE Patrol – Focus on enforcement during 9:00 pm to 6:00 am when alcohol-related fatalities and safety belt usage is lowest in order to make the greatest impact on lowering traffic deaths.
- ISP conducted the patrols in IDOT's 23-county breakdown. During FY 2014, ISP worked 7,866 enforcement hours and issued a total of 14,969 citations and written warnings. Officers issued 1,257 occupant restraint citations and 837 DUI, drug/alcohol related and zero tolerance violations.
- Funded in 2014 by the Illinois Department of Transportation







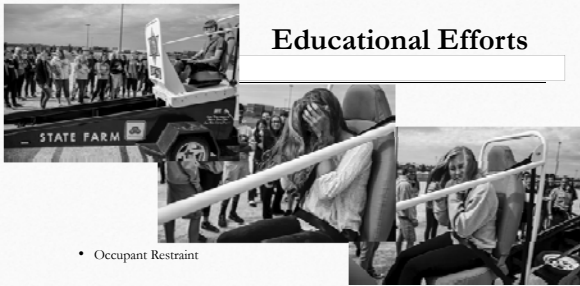
Educational Efforts

Specific Activities to educate underage drivers about dangers of drinking and driving:

- Fatal Vision Goggles - Golf Cart Course



Educational Efforts



- Occupant Restraint

Educational Efforts

- Roll Over Simulator



Educational Efforts



- Virtual Reality Simulator

Educational Efforts



- Mock DUI Crash





Educational Efforts: IDOT/ISP Billboard



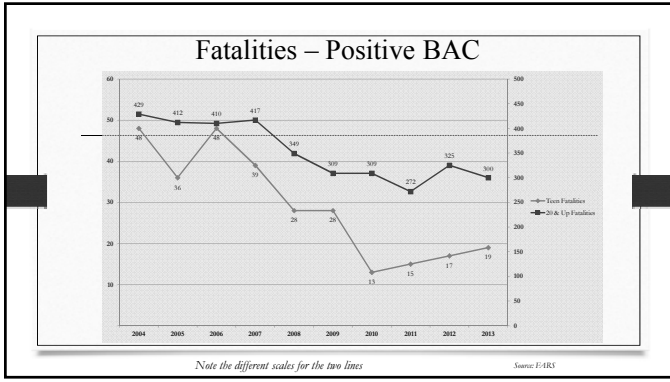
Educational Efforts: IDOT/ISP Billboard

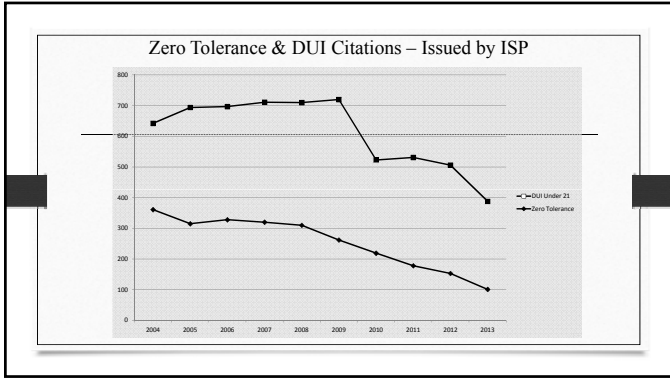


SUCCESS SHOWN THROUGH STATS

Illinois Teen Fatalities

YEAR	FATALITIES	YEAR	FATALITIES w/ BAC
2004	125	2004	48
2005	145	2005	36
2006	151	2006	48
2007	155	2007	39
2008	93	2008	28
2009	79	2009	28
2010	86	2010	13
2011	81	2011	15
2012	71	2012	17
2013	71	2013	19
GRAND TOTAL	1057	GRAND TOTAL	291





Questions?