

### Adopting Successful Teen Safe Driving Programs from Other States

Lifesavers Conference 2015  
Session 8—10:45am-12:15pm

3/17/2015

---

---

---

---

---

---

---

---



---

---

---

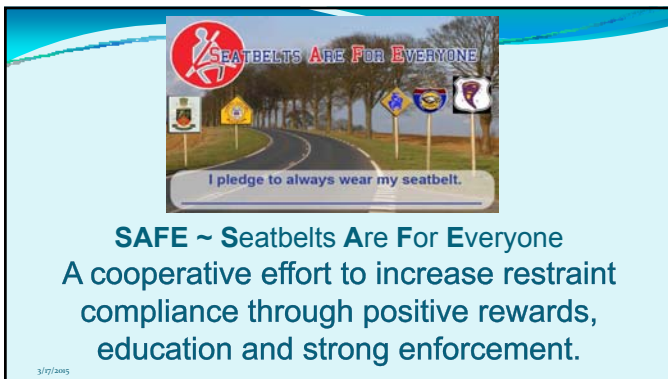
---

---

---

---

---



---

---

---

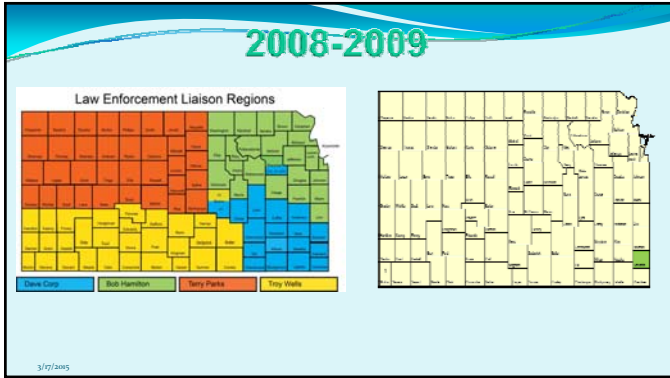
---

---

---

---

---




---

---

---

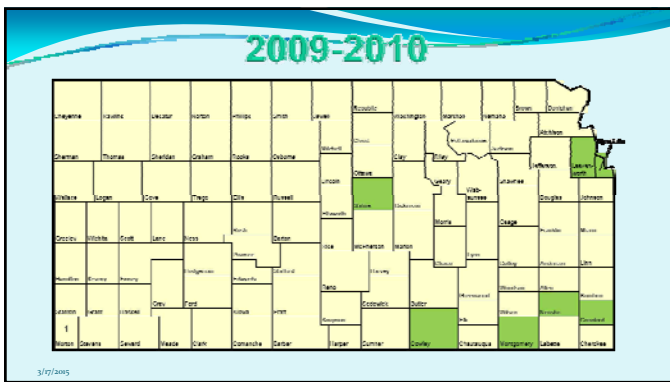
---

---

---

---

---




---

---

---

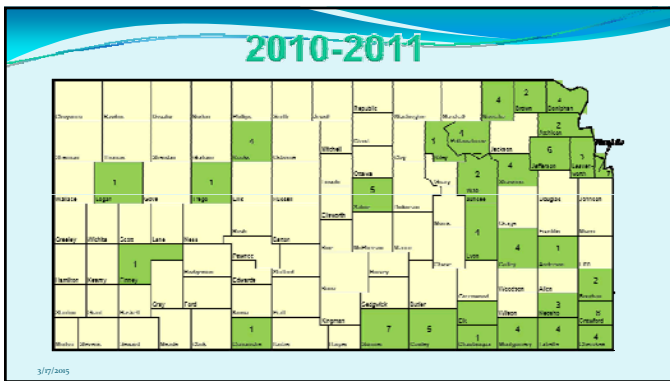
---

---

---

---

---




---

---

---

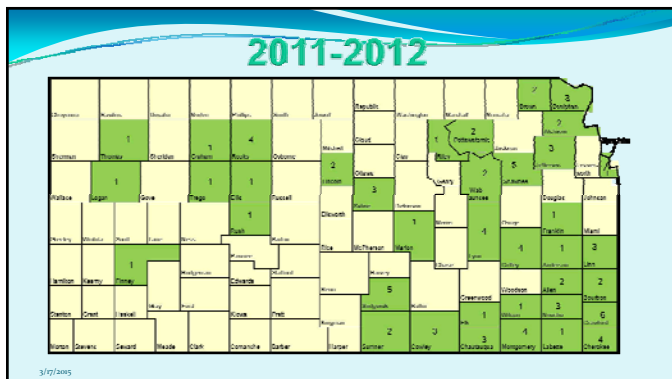
---

---

---

---

---




---

---

---

---

---

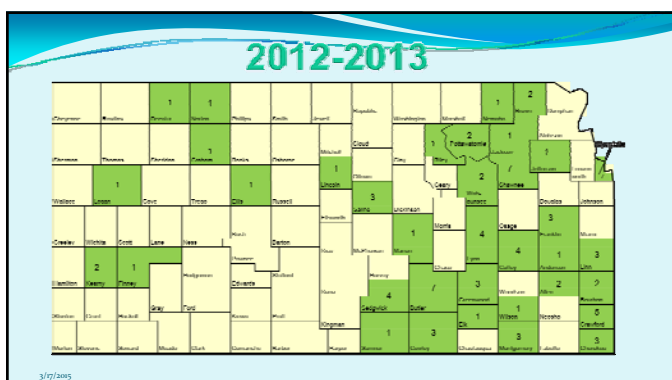
---

---

---

---

---




---

---

---

---

---

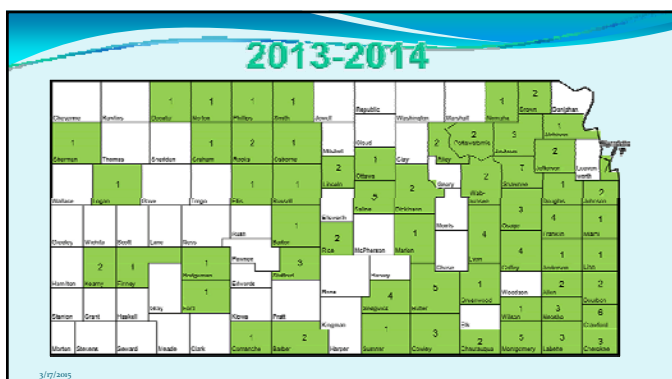
---

---

---

---

---




---

---

---

---

---

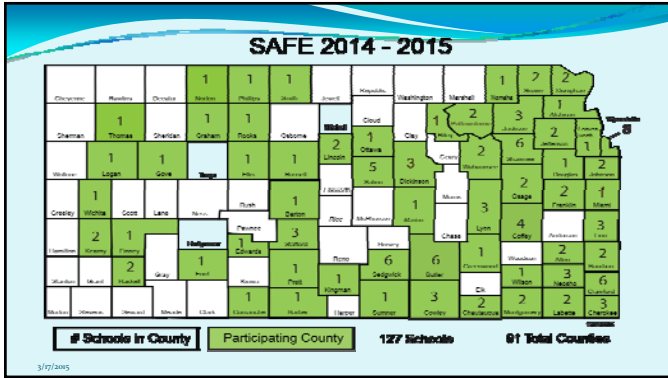
---

---

---

---

---




---

---

---

---

---

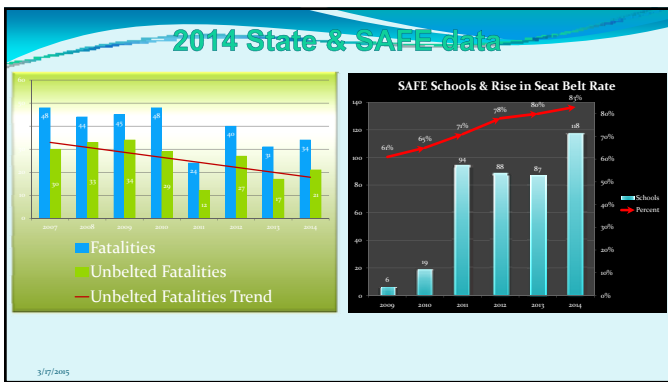
---

---

---

---

---




---

---

---

---

---

---

---

---

---

---




---

---

---

---

---

---

---

---

---

---

### FUNDING SAFE

- City Council, County Commission, Local Govt.
- Insurance Companies & local agents
- Local hospitals
  - Community assistance funds & foundations
- Local businesses and business leaders
  - Banks, Retailers, Ranchers
- Sheriff & Trooper Assoc
- Funeral Homes
- Convenience Stores
- Churches, civic groups, other nonprofits
- Professionals
  - Doctors, Lawyers, Accountants, Engineers, etc.

---

---

---

---

---

---

---

---

### DIVERSION & Local funds

- 15 programs supported by diversion money
- Nine programs supported by local law enforcement
- 13 programs supported by other local funding sources
  - Not all local funding is reported

---

---

---

---

---

---

---

---

## Senate Bill 274

---

---

---

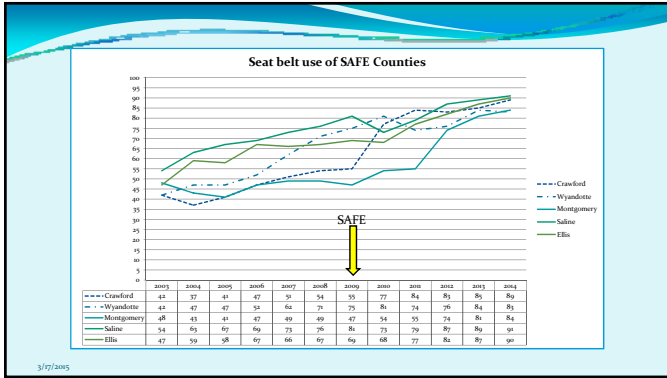
---

---

---

---

---




---

---

---

---

---

---

---

---

---

---

---

---

## Enforcement Period

### Citations in 2014

The 2014 SAFE enforcement period took place between February 24 and March 7. Multiple agencies across the state were invited to participate. Focus was directed toward the primary seatbelt law while state and local law enforcement patrolled around high schools before and after school.

Thanks to the **109** agencies that participated in the enforcement period.

3/17/2015

---

---

---

---

---

---

---

---

---

---

---

---

## The need for **ENFORCEMENT**

- Without enforcement, SAFE is not as successful.
- It makes Law Enforcement more likely to become aware of the law.
- Law Enforcement Officers are more likely to obey the law and buckle-up themselves.
- Enforcement filters up to the Adult and down to the younger child.
- It allows Law Enforcement to observe the success and or failure of the program and share this with the community.

3/17/2015

---

---

---

---

---

---

---

---

---

---

---

---

### HIGH VISABILITY SCHOOL ENFORCEMENT FEBRUARY 27<sup>TH</sup> THRU MARCH 04<sup>TH</sup>

- ANNOUNCE THE ENFORCEMENT (no surprises)
- ASSIGN A DEPUTY TO PATROL AROUND YOUR HIGH SCHOOLS
- 30 MINUTES BEFORE SCHOOL AND 30 MINUTES AFTER SCHOOL
- WORK WITH YOUR LOCAL POLICE DEPARTMENTS AND OR LOCAL TROOPER

3/19/2015

---

---

---

---

---

---

---

---

### SEATBELT CITATIONS ISSUED OVER SIX YEARS CRAWFORD COUNTY

- 2008 - PRE S.A.F.E. 292 CITATIONS
- 2009 - 1<sup>ST</sup> YEAR SAFE 64 CITATIONS
- 2010 - 2<sup>ND</sup> YEAR SAFE 25 CITATIONS
- 2011 - 3<sup>RD</sup> YEAR SAFE 06 CITATIONS
- 2012 - 4<sup>TH</sup> YEAR SAFE 01 CITATIONS
- 2013 - 5<sup>TH</sup> YEAR SAFE 04 CITATIONS



3/19/2015

---

---

---

---

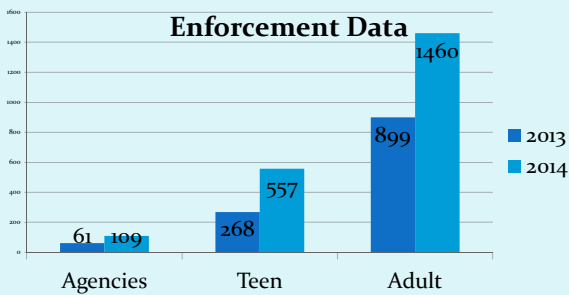
---

---

---

---

### Enforcement Data



3/19/2015

---

---

---

---

---

---

---

---

*In 2013*  
**84 out of 105**  
*or 80% of*  
**Kansas Counties**  
*experienced a*  
**FATAL CRASH**

3/17/2015

---

---

---

---

---

---

---

---

**It's not just about teens...**

- The 2008/2009 seatbelt survey result in Crawford County was 54%.
- The 2009/2010 seatbelt survey result was 77%. This is an increase of 23% and included the age group of 0-17 years old.
- The current rate is 83%. This is a 65 % increase since SAFE started.
- The age group of 10-14 year olds increased by 36%.
- 5-9 year olds increased by 21%.

3/17/2015

---

---

---

---

---

---

---

---

**AWARDS**




**PEOPLE SAVING PEOPLE AWARD**

**GOVERNORS HIGHWAY SAFETY ASSOCIATION**  
**The Peter K. O'Rourke**  
**Special Achievement Award**

3/17/2015

---

---

---

---

---

---

---

---





---

---

---

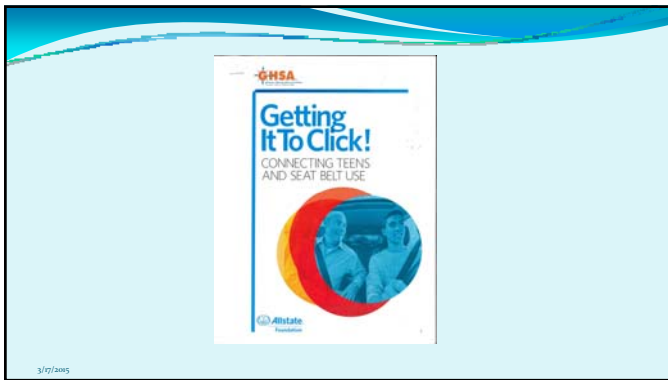
---

---

---

---

---



---

---

---

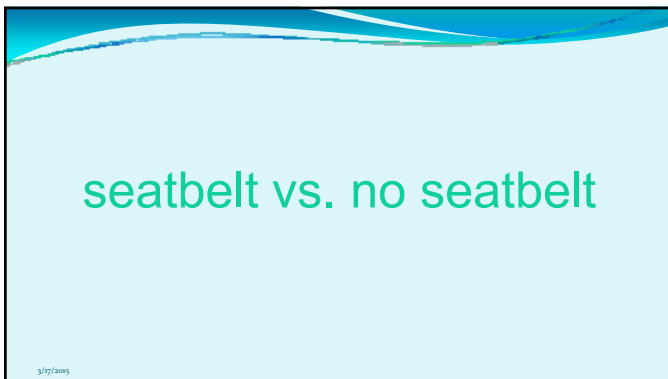
---

---

---

---

---



---

---

---

---

---

---

---

---



---

---

---

---

---

---

---

---



---

---

---

---

---

---

---

---

seatbelt vs. no seatbelt

Two side-by-side photographs. The left image shows a driver wearing a seatbelt in a car. The right image is a smaller version of the white car with a damaged roof from the first image, showing the driver's position without a seatbelt.

---

---

---

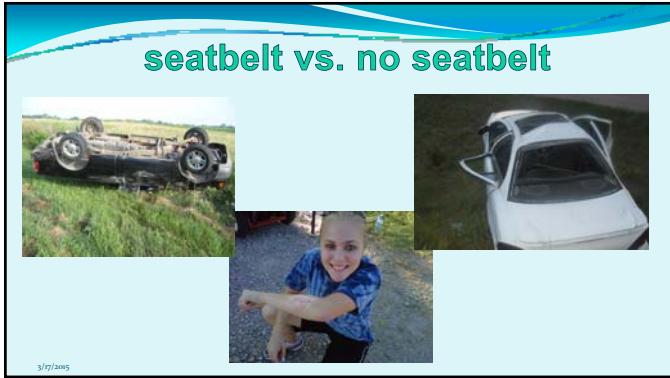
---

---

---

---

---



---

---

---

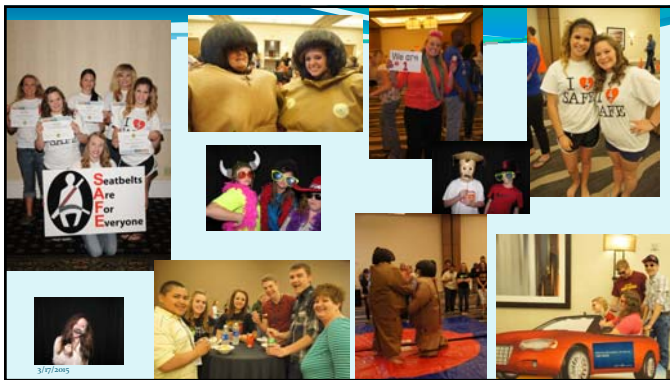
---

---

---

---

---



---

---

---

---

---

---

---

---



---

---

---

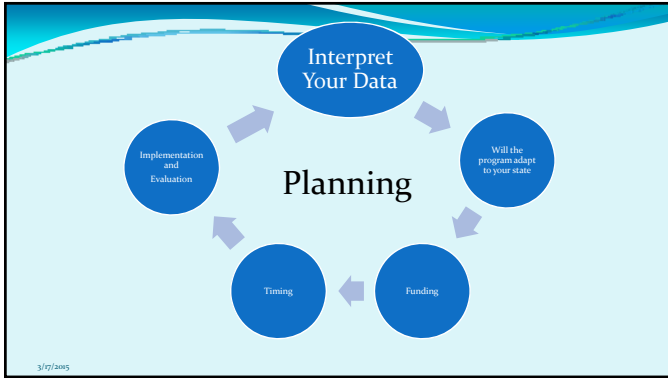
---

---

---

---

---



---

---

---

---

---

---

---

---

Norraine Wingfield  
Project Director  
Kansas Traffic Safety Resource Office  
[www.ktsro.org](http://www.ktsro.org)  
800-416-2522  
[nwingfield@dccca.org](mailto:nwingfield@dccca.org)

[www.ktsro.org/safe](http://www.ktsro.org/safe)  
[@SAFEks](https://www.facebook.com/seatbeltsareforeveryone)

Small text in the bottom left corner of the slide reads "3/20/2015".

---

---

---

---

---

---

---

---