


Lifesavers 2015
Alexander Weiss

TRAFFIC INCIDENT MANAGEMENT AND PUBLIC SAFETY CONSOLIDATION

Overview

- Every community may face this kind of event
- Resolution requires planning, discipline, and coordination
- Sometimes conflicts between first responders affect performance.



Conflict takes on many forms

- OK Trooper suspended 5 days for scuffle with paramedic. July 2009
- Buffalo Police, firefighters clash over right to administer Narcan. Mar 25, 2014
- "The NYPD and the FDNY have more overlapping services than most urban police and fire departments," "Both are tradition-bound and aggressive about their turf. The result has been a uniquely tense relationship." *Governing* 2005

Conflict Between Police and Fire at Traffic Crash Scenes

- In Missouri, in 2003, a Fire Captain was arrested for refusing to move fire truck.
- In 2010, a Battalion Chief in California was handcuffed for refusing a request by CHP to move a fire truck.

Police Officer Arrests Firefighter At Accident Scene In California 2-5-14



Fire Department Response

- "In an emergency, the Chula Vista Fire Department is responsible for the safety and care of the injured victims and for the safety of the crew. Our goal at an emergency is to secure the scene and begin emergency care and transport victims to the hospital as soon as possible. Last night, there were two injured passengers our crew needed to reach and treat in a rollover vehicle accident on Interstate 805... While we work very well together with the CHP 99% of the time, we need to find out what happened last night and how we can improve training and communication to prevent something like this from happening in the future."

Why We Fight

EMS World: June 2009

- Failures in communication;
- Personality conflicts;
- Lack of cooperation; and
- Misunderstandings of authority and job responsibilities.

Areas of Conflict

- Shutting down roads following vehicle accidents and blocking them for long periods of time with fire trucks or ambulances;
- Conflicts over field DUI blood draws;
- Law enforcement response to unsafe scenes;
- Driving habits of volunteer members in private vehicles;
- Control of evidence during fire or EMS incidents;
- Conflicts between fire and EMS agencies.

Traffic Incident Management



- TIM consists of a planned and coordinated multi-disciplinary process to detect, respond to, and clear traffic incidents so that traffic flow may be restored as safely and quickly as possible. Effective TIM reduces the duration and impacts of traffic incidents and improves the safety of motorists, crash victims and emergency responders.

Roles in TIM

- Securing the incident scene
- Providing emergency medical aid until help arrives
- Safeguarding personal property
- Conducting accident investigations
- Serving as incident commander
- Supervising scene clearance
- Assisting disabled motorists
- Direct traffic
- Protecting the incident scene
- Suppressing fires
- Providing emergency medical care
- Serving as incident commander
- Providing initial HAZMAT response and containment
- Rescuing crash victims from contaminated environments
- Rescuing crash victims from wrecked vehicles
- Arranging transportation for the injured
- Assisting in incident clearance
- Providing traffic control until law enforcement or DOT arrival

Police

Fire and Rescue

Senior Executive Transportation & Public Safety Summit

June 2012

- Incident responders have traditionally focused on specific agency responsibilities as they manage and clear incident scenes. Each responding agency or group has a different mission but they share common goals and priorities – safe, efficient, and effective incident management. Participants described instances in which critical tasks have been carried out sequentially and separately, whereas coordination between responder groups would have resulted in faster clearance times and safer incident sites. Moreover, this lack of coordination occasionally results in conflict or confusion over roles, leading to unnecessary traffic delays.

Coordination Efforts



Another Way

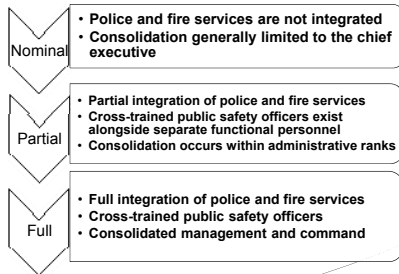


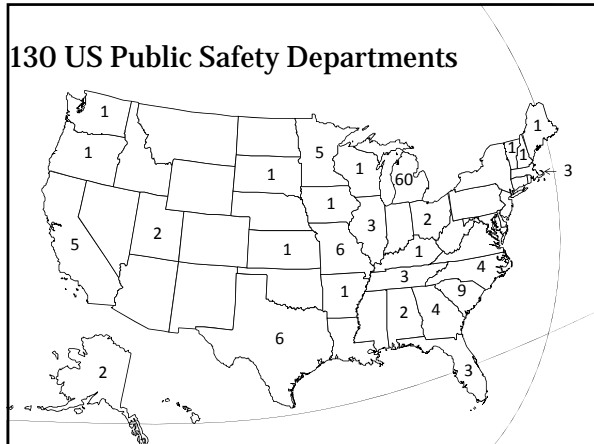
COPS/MSU Public Safety Study

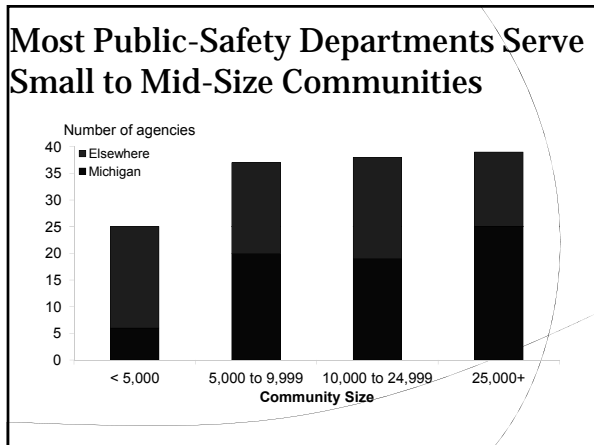
- Little previous research has systematically examined these departments
- Focus group
- Site visits to several communities
- Census of public-safety departments and surveyed their characteristics.



Types of Public Safety Consolidation







Highland Park TX

- Town of 9000, Dallas County
- In 1913 placed town marshal in charge of police and fire
- New police chief in 1920 created separate departments
- 1977 created department of public safety

Highland Park

- 54 sworn personnel
 - 38 paramedics
- Since 1979 officers assigned to 24 hour shifts
- During each shift officers spend 8 hours on patrol, 8 hours in ambulance and 8 hours with fire apparatus
- 11 PSO on duty
 - Four on patrol
 - Two engine
 - Two truck
 - Two ALS
- Two years training before fully certified
- Citizens value capacity of public safety officers

Aiken SC DPS

- County seat of Aiken County, South Carolina
- Population 30,000
- Founded in 1835
- The town greatly expanded after a large Atomic Energy Commission Plant, now known as the Savannah River Site, was located there to develop materials for nuclear weapons.



Aiken

The department took several steps to achieve integration in the 1970s.

- Consolidating administrative functions, including communications, records, training, and inspections
- Having police officers attend firefighter training
- Having firefighters attend basic law-enforcement training at the South Carolina Criminal Justice Authority.



May Require Fewer Personnel

- 135 full-time employees
 - 89 sworn PSO
 - 28 civilian
 - 18 drivers
 - 33 paid on call firefighters.
- Police force of 147 police personnel
 - 95 sworn
 - 40 other full-time
 - 12 part-time
- Firefighting force of about 60

Aiken DPS

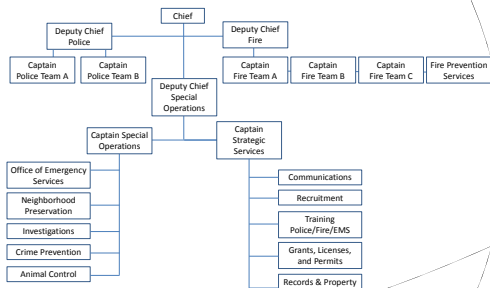
Anderson SC

Sunnyvale

- City of 140,00 in Silicon Valley
- Established as a city in 1912
- Paid police officers and volunteer firefighters through 1940's
- In 1950 created DPS
- By 1965 department had 143 sworn officers
- Current staffing includes 195 sworn, and 80 non-sworn.



Sunnyvale DPS

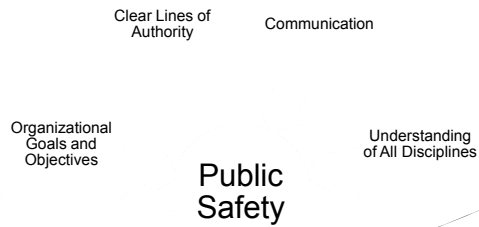


Cross training adds to flexibility

- October 2011 department deployed 24 fire team officers coming off shift to a workplace shooting.
- Costs per capita are significantly lower than other neighboring communities.



Consolidation and TIM



Concluding Thoughts

- Public Safety Consolidation is one approach to addressing the complexity of incident response.
- Not for everyone-but for many communities it's a good fit.



Alexander Weiss, 847-644-3930,
aweiss@alexanderweissconsulting.com

Questions