

Plan:

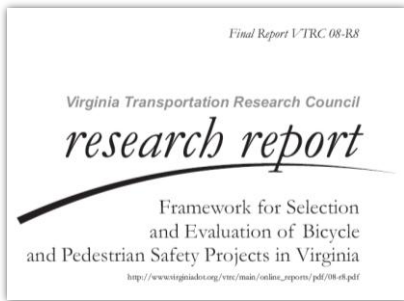
Typical safety application of bicycle/pedestrian data

New challenges for and to drivers

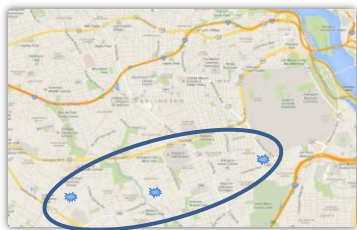
Safety? Public health? Livable cities?

Unexamined privilege - marginal disutility of driving

Data driven, or data supported?



Four steps



Calculated exposure

62,000 vpd x 500 bikes+peds =
31,000,000 potential conflicts



You can build cities for cars,
or you can build cities for people.

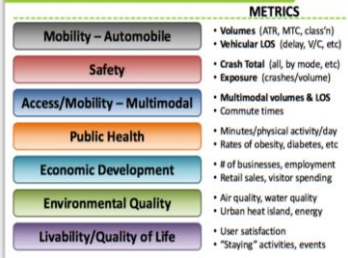
-Enrique Peñalosa
Former mayor of Bogotá

Our Design Goals have Evolved

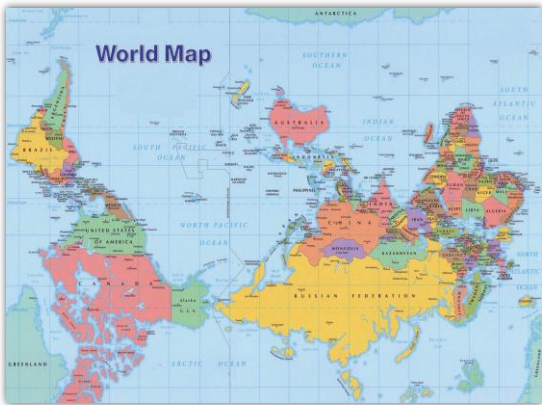


With permission, NYC DOT

Our Metrics Must Evolve, Too



With permission, NYC DOT



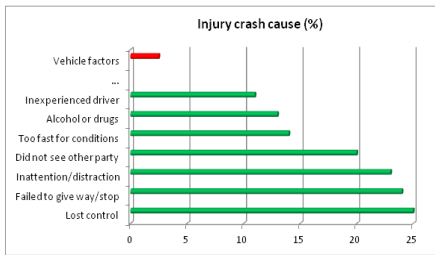




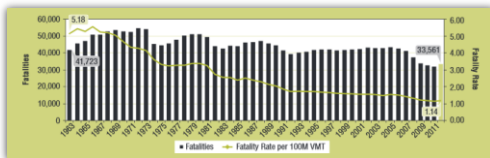
Traffic deaths to cyclists amount to
0.02% of all fatalities, or
551 out of more than 2.5 million (2010).

Putting things in perspective

Death from heart disease is 1085 times more likely.
Death from respiratory disease is 251 times more likely.
Death from stroke is 235 times more likely.



NZTA Crash Analysis System




Source: National Center for Health Statistics and the National Highway Traffic Safety Administration's Center for Statistics and Analysis

Two excerpts from CBS News'
1965 National Drivers' Test

EXECUTIVE SUMMARY
The New York State Department of Transportation (NYSDOT) is a key partner and stakeholder in the effort to address the "Traffic Enforcement Gap" in New York City. This report was prepared as an FY13 DOT Strategic Planning Report for the New York State Department of Transportation, and is intended to provide information and support for the City of New York's efforts to address this issue.

THE ENFORCEMENT GAP



Examining privilege - NYC

The dis-utility of driving - Malmö, Sweden



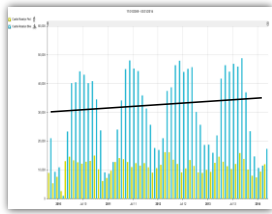
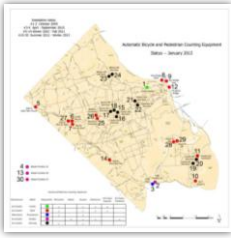
Photo: Jens Lennartsson

Compete for the most ridiculous car trip - win a bicycle

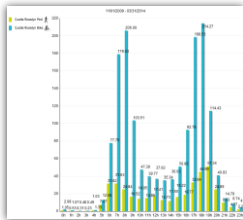


My partner parked the car for me every day. I never drove it. I never parked it. I never started it. I never stopped it. I never cleaned it. I never washed it. I never filled it up. I never changed the oil. I never checked the tires. I never washed the windows. I never cleaned the interior. I never polished the exterior. I never took it to the mechanic. I never drove it to work. I never drove it to the store. I never drove it to the gym. I never drove it to the office. I never drove it to the bank. I never drove it to the post office. I never drove it to the library. I never drove it to the church. I never drove it to the school. I never drove it to the hospital. I never drove it to the airport. I never drove it to the train station. I never drove it to the bus stop. I never drove it to the parking lot. I never drove it to the street. I never drove it to the driveway. I never drove it to the garage. I never drove it to the driveway. I never drove it to the garage.

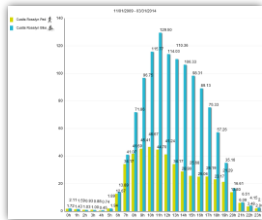
FHWA Office of International Programs



More at: bikearlington.com/dashboard



Average weekday trail volumes



Average weekend trail volumes

