

Building Evaluation into Your Teen-Led and Other Traffic Safety Programs



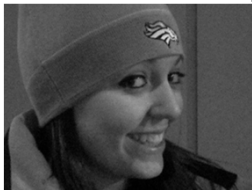
- ▶ Jona Johnson, Executive Director and co-founder, Alexa's Hugs
- ▶ (970) 988-5481 (cell)
- ▶ alexahugs@gmail.com
- ▶ www.AlexaHugs.com
- ▶ @AlexaHugs on Twitter

Our story begins...



The next day...

This is Alexa's Dad. Thank you for all your messages and condolences. I have received many messages asking what you can do for the family. Here is my answer to you: You can honor Alexa by wearing your seat belt. Every time you click it, across your belt and across your shoulder, think of Alexa. Feel that belt across your shoulder and across your heart and think of it as Alexa's hug. She would want you safe. You know this is true. Deal? Deal!



A tassel hangs. A Hug... HUGS!



Our Programs Expand

- ▶ General and custom Hugs™
- ▶ Hugs™ for schools & graduating seniors
- ▶ Click It to WIN It
- ▶ Design Your Own Hug™
- ▶ Seat Belt Challenge



What do we measure?

- ▶ Evaluate data already published.
- ▶ Would this be important to our mission?
- ▶ How could we collect this data?
- ▶ Do we have a need for new data that hasn't been collected?

Start With The Basics

► Who?

- Drivers only
- Passengers
- Age or other identifiers
- Count first 100 vs all
- Count all for specific time period



Start With The Basics

► What?

- What data points are important?
- Seat belts, cell phones, texting, distracted
- Clearly define what you are evaluating.
 - Does someone holding a cell phone count for texting?
 - Does a seat belt tucked under the arm count as buckled up?

Start With The Basics

► When?

- Does date or day of week matter?
- Time of day
- Weather
- Specific period of time



Start With The Basics

► **Where?**

- Determine your location(s)

► **Why?**

- Does it relate to our mission?
- What do we hope to accomplish?
- What are our project goals?



Alexa's Hugs Seat Belt Challenge 2013-2014

Class	Teacher	Year	Score
1st	Ms. Smith	2013	95%
2nd	Mr. Jones	2013	88%
3rd	Ms. Brown	2013	92%
4th	Mr. White	2013	85%
5th	Ms. Green	2013	90%
6th	Mr. Black	2013	82%
7th	Ms. Gray	2013	87%
8th	Mr. Blue	2013	80%
9th	Ms. Red	2013	85%
10th	Mr. Purple	2013	78%
11th	Ms. Yellow	2013	83%
12th	Mr. Pink	2013	75%

Start With The Basics

► **How?**

- Data collection methods
 - Clipboards, tally counters, surveys
- Establish definitions
- Who will collect the data?
 - Staff, volunteers, collaborative partners
 - Training is key!



Alexa's Hugs Seat Belt Challenge

Practical

- Seat belt usage.
- All occupants
- School exits.
- Added cell phone usage in second year.

Not Practical

- Age, gender, race demographics
- Academic performance
- Extracurricular activities

Challenges

- ▶ Finding available volunteers
- ▶ Training volunteers
- ▶ Logistics - how many exits?
- ▶ Weather

“Let me show you my wheel.”

- ▶ Visit with others and learn from them.
- ▶ Don't reinvent everything!
- ▶ Collaborate with other organizations.