



FUTURE OF MOTORCYCLE RIDER TRAINING

Francis W. Ludwig
Commander, Navy Region Southwest
Francis.Ludwig@navy.mil
(619) 532-1336
5 April 2016



BACKGROUND
CURRENT SITUATION – WHERE WE ARE
CHALLENGES – OPERATIONAL- ADMINISTRATIVE
INITIATIVES
BEST PRACTICES/SUCCESSSES/FAILURES
BACK UP SLIDES



BACKGROUND

- MILITARY/DOD VERSUS “CIVILIAN” PROGRAMS
- CNO HIGH INTEREST ITEM
- CNIC RESPONSIBLE TO FUND/SUPPORT PROGRAM
- NRSW EXECUTES/IMPLEMENTS THE PROGRAM
- IN HOUSE WORK FORCE
- CONTRACTED SERVICES – VERSION 1,2,3...



CURRENT SITUATION

- CONTRACT OPERATIONS
- TOTAL CONTROL PROVIDES SERVICES
- 10 INSTALLATIONS THROUGHOUT NRSW
- ~ 3800-6000 STUDENT THROUGHPUT ANNUALLY
- BASIC RIDER COURSES – ADVANCED RIDER COURSES

4



CHALLENGES-OPERATIONAL

- MOTORCYCLE RANGES...AND DBS, ATV, EVOC...
- SMART TRAINERS/SIMULATORS
- YOUNGER RIDERS AND FASTER RIDES
- TO FURNISH OR NOT TO FURNISH?

5



CHALLENGES-ADMINISTRATIVE

- CONSTANT CONTRACT CHANGES (SCOPING)
- INCREASING NUMBER OF RIDERS (W/IN NRSW)
- ADMINISTRATIVE ISSUES (LOTS OF 'EM)

6



INITIATIVES

- CONTRACT/IN HOUSE/HYBRIDIZED SERVICE PROVIDER
- EXPORTABLE COMMAND MENTORSHIP PROGRAMS
- QUALITY CONTROL INSPECTION PROCESS
- MOTORCYCLE ROUND TABLE MEETINGS

7



BEST PRACTICES/SUCCESSSES

- REQUIRED APPROVAL/TRAINING/LICENSE/PPE, ETC.
- INTRUSIVE LEADERSHIP
- MOTORCYCLE SAFETY REPRESENTATIVES (MSR)
- FLEET/AVIATION/SHORE SAFETY SEMINARS
- MISHAP/TRAINING METRICS
- TRACKING BY COMPONENT/COMMAND

8



BEST PRACTICES/SUCCESSSES

- AUTOMATED DATA COMPILATION
- DEMOGRAPHIC AND LOGISTICAL UNDERSTANDING
- DIMENSIONAL ANALYSIS
- AUTONOMY AND LATITUDE

9



OPPORTUNITIES FOR IMPROVEMENT

- PLAN FOR CHANGE BEFORE IT HAPPENS
- COLLABORATIVE LEADERSHIP
- COMMUNICATION
- WHAT'S MY COA?



BACK UP SLIDES

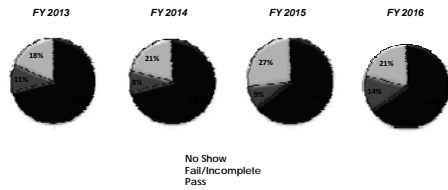
SANITIZED

Francis W. Ludwig
 Commander, Navy Region Southwest
Francis.ludwig@navy.mil
 (619) 532-1336
 5 April 2016



As of 2/28/2016

BRC

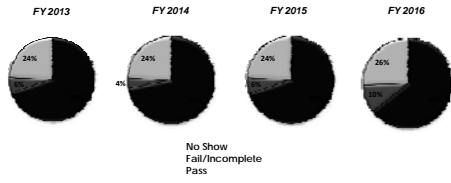




NAVY REGION SOUTHWEST (NRSW) MOTORCYCLE SAFETY

As of 2/28/2016

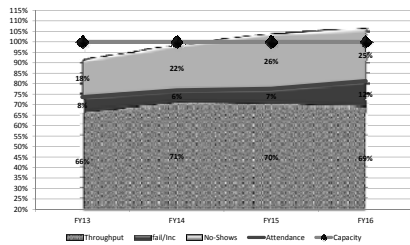
BRC-2/ARC/IRC





NAVY REGION SOUTHWEST (NRSW) MOTORCYCLE SAFETY

As of 2/28/2016





NAVY REGION SOUTHWEST (NRSW) MOTORCYCLE SAFETY

As of 2/28/2016

NRSW Class Average				
FY	2013	2014	2015	2016
Capacity	12	12	6	6
Attended	8.8 (74%)	9.2 (77%)	4.7 (78%)	4.9 (81%)
No Show	2.1 (18%)	2.6 (22%)	1.6 (27%)	1.5 (25%)
Classes	726	690	791	315
Throughput	7.9 (66%)	8.5 (71%)	4.2 (70%)	4.1(69%)
Failure/Incomplete	.9 (7.5%)	.7 (6%)	.4 (7.2%)	.7 (12%)



NAVY REGION SOUTHWEST (NRSW) MOTORCYCLE SAFETY

As of 2/28/2016

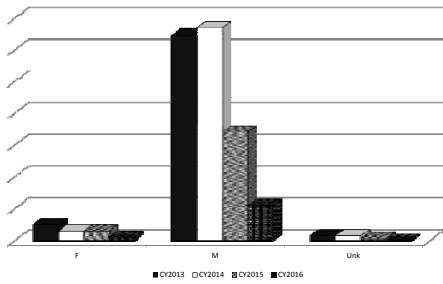
NRSW Motorcycle Class Statistics						
FY	Classes	Capacity	Attendance	Pass	Fail/Inc	No shows
2016	315	1890	1535	1301	234	474
2015	791	4746	3682	3339	343	1257
2014	690	8280	6363	5887	486	1792
2013	726	8712	6410	5754	656	1544



NAVY REGION SOUTHWEST (NRSW) MOTORCYCLE SAFETY

As of 2/28/2016

Motorcycle Mishaps - By Gender



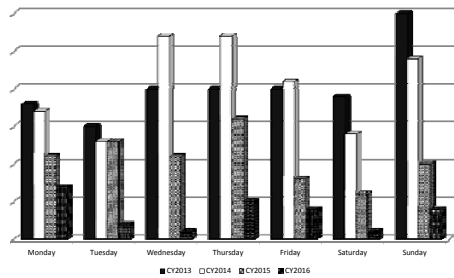
17



NAVY REGION SOUTHWEST (NRSW) MOTORCYCLE SAFETY

As of 2/28/2016

Motorcycle Mishaps - By Day of the Week



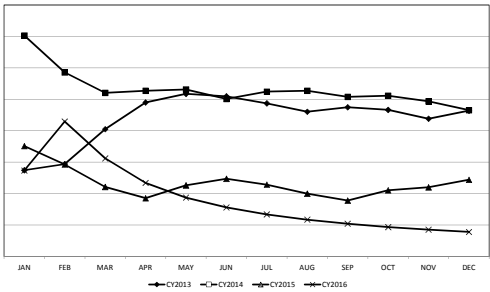
18



NAVY REGION SOUTHWEST (NRSW) MOTORCYCLE SAFETY

As of 2/28/2016

Motorcycle Mishap Rate



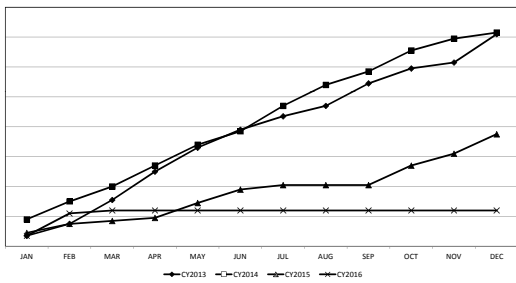
19



NAVY REGION SOUTHWEST (NRSW) MOTORCYCLE SAFETY

As of 2/28/2016

Cumulative Mishap Data



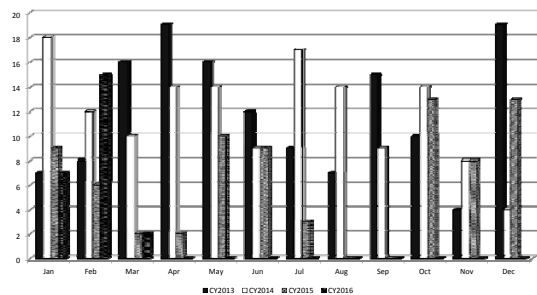
20



NAVY REGION SOUTHWEST (NRSW) MOTORCYCLE SAFETY

As of 2/28/2016

Motorcycle Mishaps - By Month

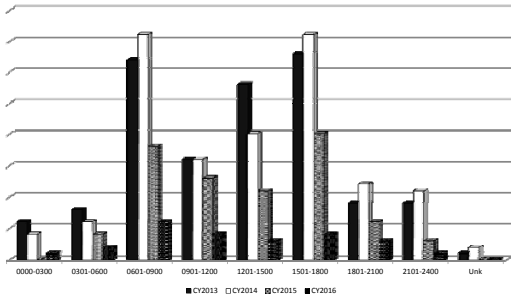


21



NAVY REGION SOUTHWEST (NRSW) MOTORCYCLE SAFETY

As of 2/28/2016
Motorcycle Mishaps - By Time of the Day

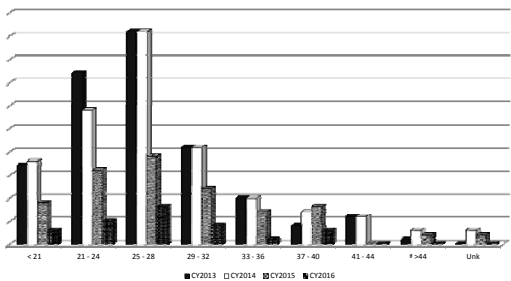


22



NAVY REGION SOUTHWEST (NRSW) MOTORCYCLE SAFETY

As of 2/28/2016
Motorcycle Mishaps - By Age

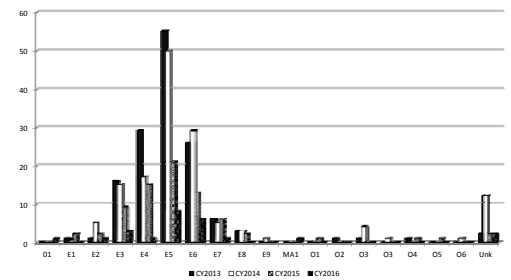


23



NAVY REGION SOUTHWEST (NRSW) MOTORCYCLE SAFETY

As of 2/28/2016
Motorcycle Mishaps - By Rank



24



OTHER DATA CAPTURED

- TYPE OF MOTORCYCLE (STYLE/DISPLACEMENT/MODEL)
- ENVIRONMENTAL CONDITIONS
- TRAINING/PPE COMPLIANCE/EXPERIENCE LEVEL
- SERVICE COMPONENT/COMMAND
- INSTALLATION
- ETC, ETC, ETC....
